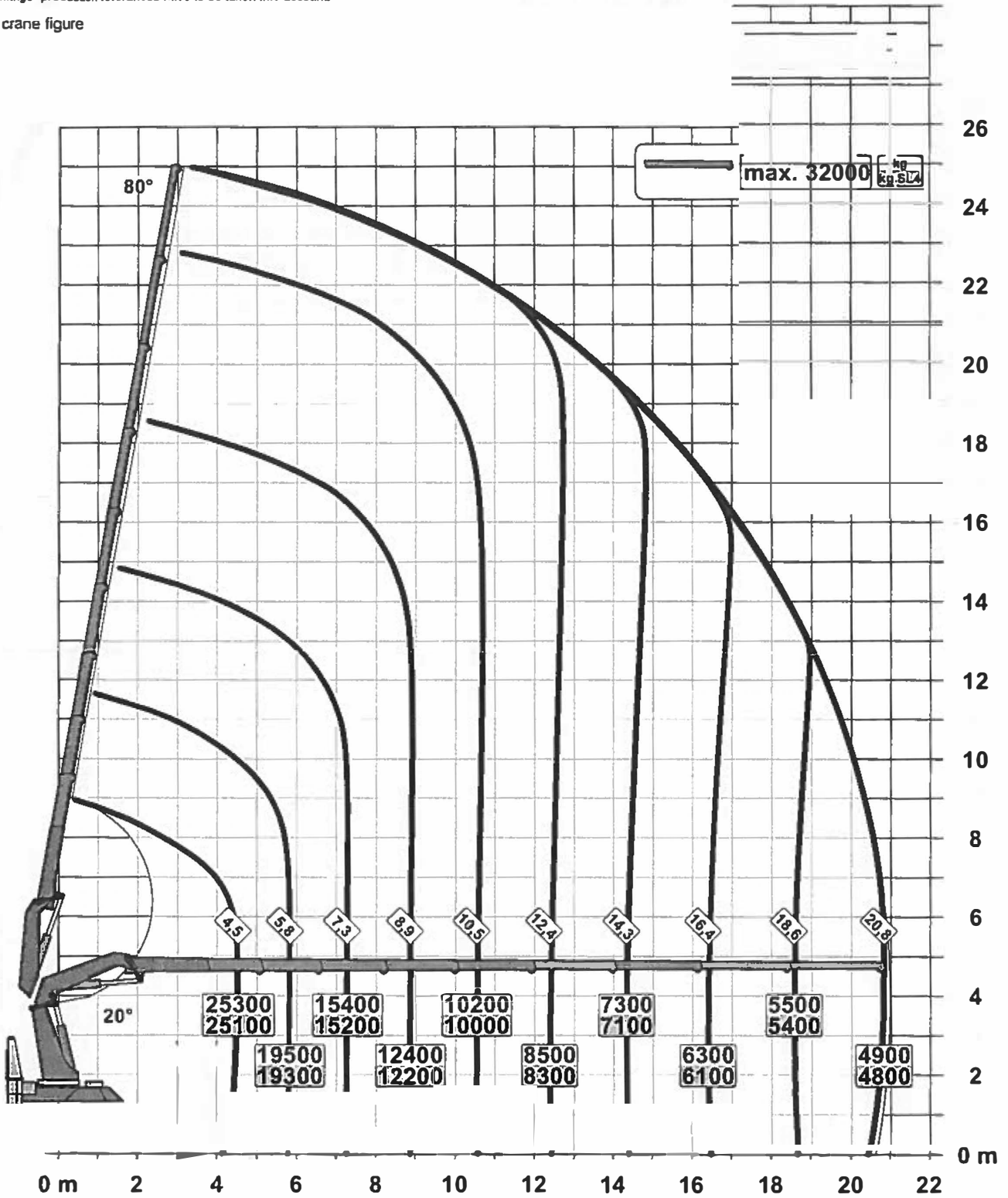


Subject to change production tolerances have to be taken into account.

Symbolic crane figure



For Rope winch load capacity refer to page

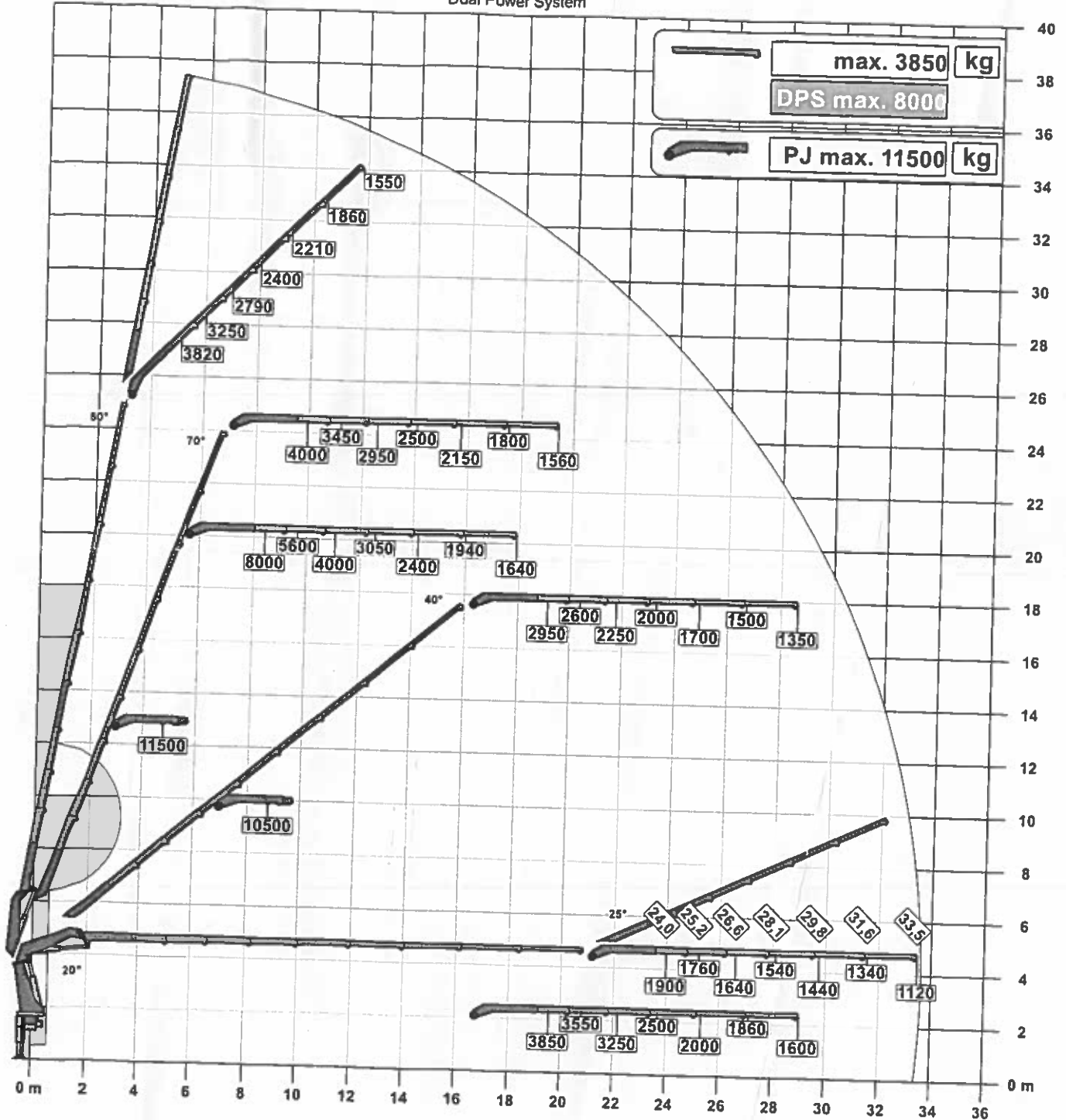
Page 020.21000 3.5t

Page 020.21100 4.5t

Subject to changes, production tolerances have to be taken into account.

Symbolic crane figure

**DPS-C**  
Dual Power System



The load capacities as per chart are not reached when using hose equipment on the Fly-Jib.

For Rope winch load capacity refer to page  
Page 020 21000 3.5t